



**Taylor-Wharton**  
Since 1742

## LSN-450 Product Data Sheet



The LSN-450 Horizontal liquid cylinder is specifically designed for transport / distribution of liquefied oxygen or nitrogen. The unit is vacuum insulated, rugged and sized for maximum payload in standard van configurations.

Oxygen service models provide internal baffles and a Full-Trycock valve for medical oxygen distribution applications; several additional models serve nitrogen distribution needs and do not contain these features.

All LSN-450 feature easy-to-use controls on one end of the unit, protected by a stainless-steel halo ring. A differential pressure gauge provides constant contents indication that is easy to read. In-line relief devices allow simple plumbing to the outside in vehicle applications.

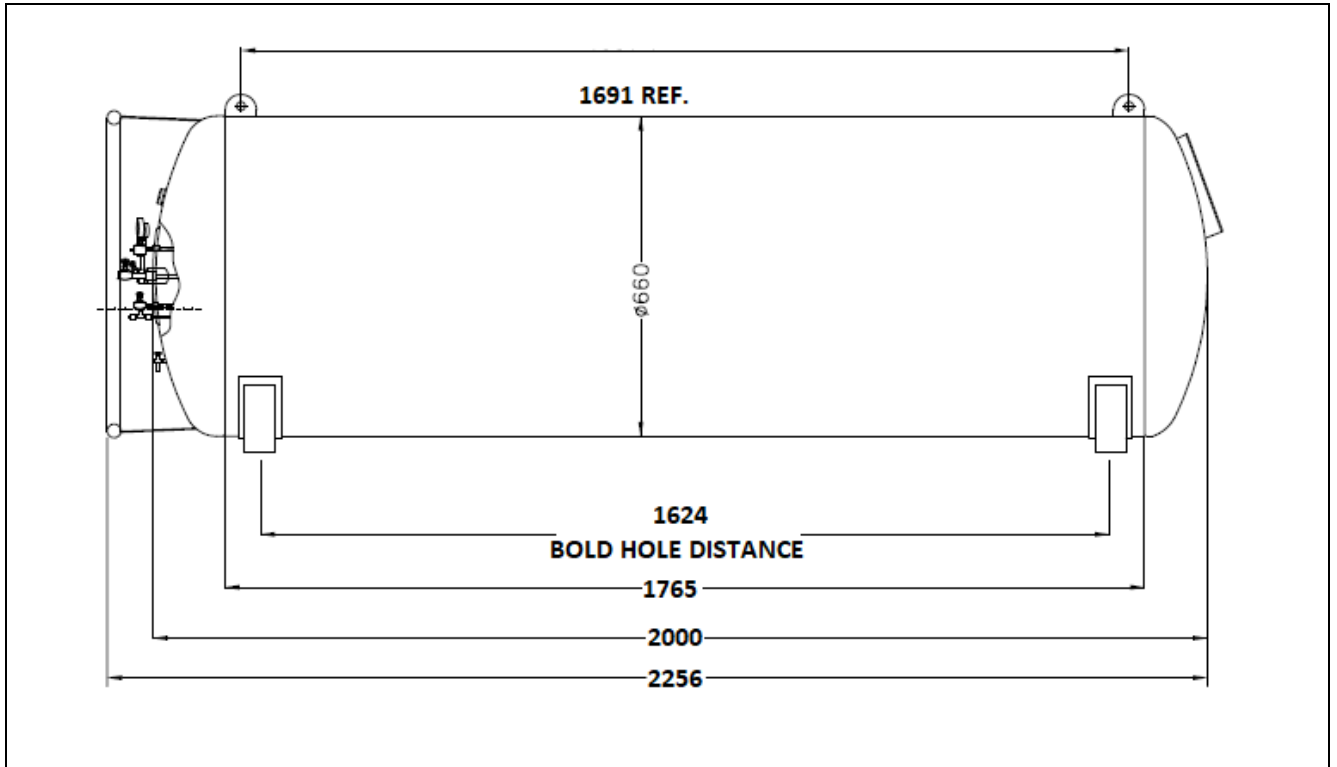
The LSN-450 may be configured for either 110 psig or 50 psig service to meet your final saturation pressure needs.

### SPECIFICATIONS

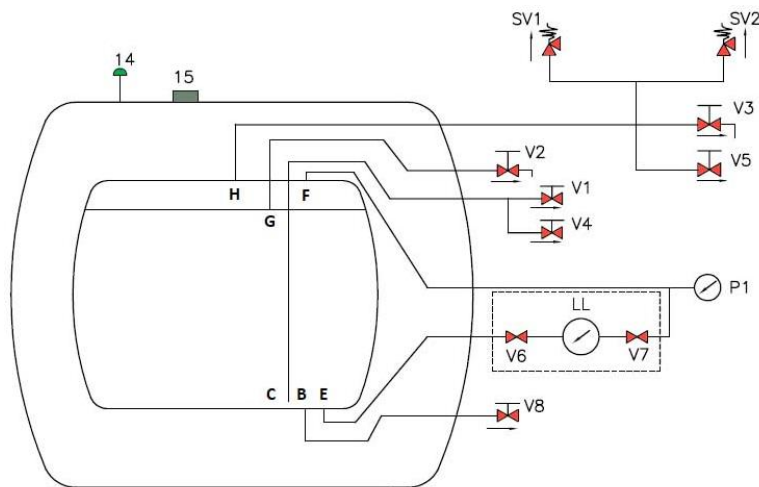
	Oxygen Service	Nitrogen Service
<b>Dimensions</b>		
Diameter	26 in. (66cm)	26 in. (66cm)
Height	27 ¾ in. (70cm)	27 ¾ in. (70cm)
Length, overall	89 in. (226cm)	89 in. (226cm)
<b>Weight, empty</b> (nominal)	520 lbs. (236 kg)	516 lbs. (232 kg)
<b>Weight, full</b> (nominal)	1246 lbs. (2771 kg)	1246 lbs. (2771 kg)
<b>Capacity</b>		
Liquid, Maximum Usable*	107 gal. (405 liter)	107 gal. (405 liter)
Weight of contents (110 psig relief valve) full capacity	886 lbs. (402 kg)	730 lbs. (331 kg)
Gaseous equivalent, Oxygen (NTP)	10,700 cu. ft.	N/A
<b>Normal Evaporation Rate</b> (per day)	2% of contents	3% of contents
<b>Design specification</b>	DOT 4L	DOT 4L
<b>Rated (DOT) Service</b>		
Pressure	115 psig (739 kPa)	115 psig (739 kPa)
<b>Safety Devices</b>		
Pressure Relief Valve	110 psig or 50 psig (759 kPa) (345 kPa)	22 psig or 110 psig (152 kPa) (759 kPa)
<b>Inner Container Frangible, disc rating</b>	200 psig (1380 kPa)	200 psig (1380 kPa)
<b>Outer jacket bursting, disc rating</b>	18 psig (124 kPa)	18 psig (122 kPa)
<b>Line Connections</b>		
Liquid, Fill and Vent Value	CGA 440	CGA 295 (vent ¾ NPT)
Full-trycock	3/8" tube	N/A

\*Usable capacity under normal conditions, with tank level.

\* Model with or without pressure building are available for option.



**PIPING SCHEMATIC**



Tag no	Description
V1	Liquid Withdrawal Line
V2	Full Trycock Valve
V3	Vent Valve
V4	Pressure Building Inlet Valve
V5	Pressure Building Outlet Valve
V6 & V7	Gauge Isolation Valve
V8	Liquid Fill Valve
SV1	Safety Valve
SV2	Safety Valve
LL	Level Gauge
P1	Pressure Gauge
14	Vacuum Bursting Disc
15	Evacuation Connection
B	Liquid Fill Line
C	Liquid Withdrawal Line
E	Liquid Instrument Line
F	Gas Instrument Line
G	Full-Trycock Line
H	Safety Line

\*Specifications are general and subject to change without prior notice

**Taylor-Wharton Malaysia Sdn. Bhd.** (776817-V)  
 Lot Nos. PT 5073, 5076 & 5077, Jalan Jangur 28/43, Hicom Industrial Estate,  
 40400 Shah Alam, Selangor, Malaysia  
 Tel : +603 5191 3003 /+603 5614 2714/2713 Fax : +603 5191 1472