



Taylor-Wharton
Since 1742

Vacuum-Jacketed CO₂ /N₂O Tanks



- Newest and most modern production facilities in Malaysia, dedicated to the design and manufacturing of cryogenic storage vessels.
- Technical expertise to design and build storage vessel to meet strict international codes and standards recognized worldwide.
- Replacing mechanically refrigerated storage tanks means lower operating cost.
VIRTUALLY NO MAINTENANCE.
- Superior vacuum insulated technology. NO LOSS SYSTEM provided your operation uses the NER (Normal Evaporation Rate)
- Environmental friendly.

Taylor-Wharton Malaysia Sdn. Bhd. (776817-V)

Lot Nos. PT 5073, 5076 & 5077, Jln Jangur 28/43, Hicom Industrial Estate, 40400 Shah Alam, Selangor, Malaysia

Tel : +603 5191 3003 /+603 5614 2714/2713 Fax : +603 5191 1472

Specification For Standard SCE Model Available From Taylor-Wharton Malaysia

Tank Designation		SCE 6000	SCE 10000	SCE 11000	SCE 17000	SCE 20000	SCE 28000	SCE 32000	SCE 43000	SCE 50000
Capacity NET Liquid * CO2	Metric Ton	5.2	9.4	10.6	16.4	19.3	27.1	30.9	41.5	48.3
Dimension (Height)	Meter	4.8	7.4	6.0	9.0	10.2	10.3	11.6	10.6	11.5
Diameter	Meter	1.9	1.9	2.2	2.2	2.2	2.5	2.5	3.0	3.0
Tare Weight	Metric Ton	4.5	6.8	8.5	10.5	12.4	14.6	18.9	24.9	27.2
Gross Operating Weight	Metric Ton	9.7	16.2	19.1	26.9	31.7	41.7	49.8	66.4	75.5
Normal Evaporation **	% per day	0.07	0.05	0.05	0.04	0.04	0.04	0.03	0.03	0.03
Max. Allowable Working Pressure	Bar	24								
Min. Design Temperature	Degree Celsius	-60								

Note :

* based on Cold Vessel Volume, with Product Saturated at -17.8 Degree Celsius, 95% full trycock volume

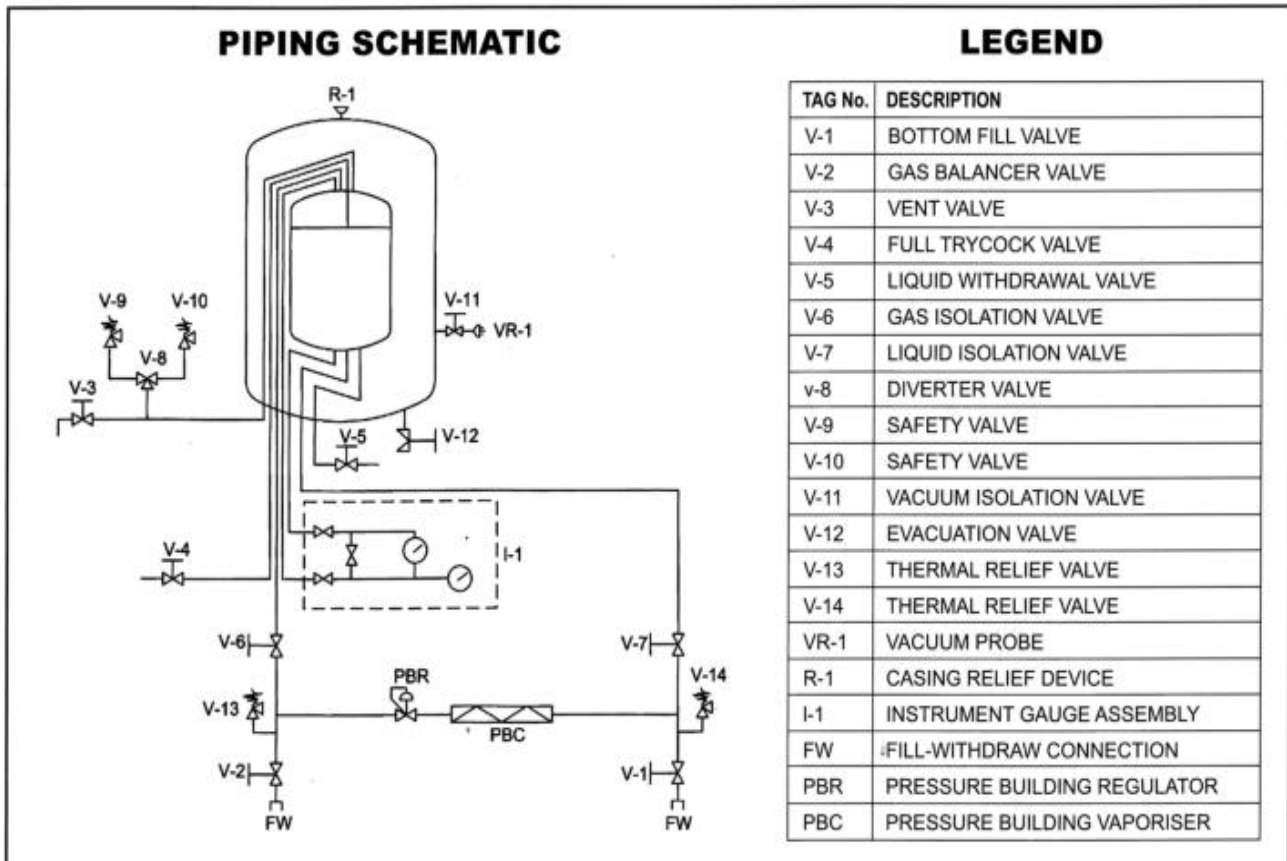
** Normal Evaporation Rate based on Net Liquid Capacity

Design Code : ADM, Inner Material : P355NL1 (1.0566) / P355NL2 (1.1106)

Also available – ASME – Inner Vessel Material : SA612 / SA516 GR70N

Data for N2O is available upon request.

Also available in horizontal model.



Specification are general and subject to change without notice.