



Taylor-Wharton
Since 1742

EasyCarb 750 HF



Meet the EasyCarb-750 HF

Convenient, simple and durable, the new EasyCarb HF is designed to make your job easier. Featuring superior dimensions and intelligent design, this model redefine performance.

Maximize your fill, minimize your cost

- The EC750 HF model meets the demand of high flow and high volume customers
- New faster fill design.
- New and improve optional Vent-Fill feature.

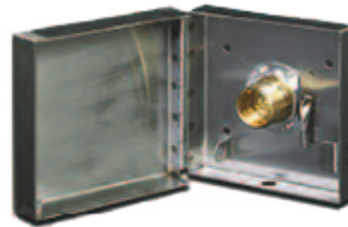
Taylor-Wharton® EasyCarb Offers :

- Newly designed faster fill system – for optimum daily deliveries
- 100% stainless steel beverage vaporizer coil – for greater continuous and peak flow rates
- Most reliable “Automatic Fill Shut-Off System” – designed and vetted by industry experts
- Improved labeling and component identification
- Color coded pressure gauges highlighting operating ranges
- Newly designed V-Shaped Legs with removable shipping ring
- High quality fittings and simplified plumbing – cleaner looks, less potential for leaks and less maintenance / downtime
- Better thermal performance – longer product hold times and less venting

EC750 HF Specifications

MODEL NO		EC750HF
Dimension		
Diameter	in. (mm)	26 (660)
Height	in. (mm)	70.5 (1791)
Height with legs	in. (mm)	74.0 (1874)
Weight		
Empty lbs. (kg) (Nominal)		396 (180)
Capacity		
Gross Volume	gal (liter)	93 (351)
Net Storage Volume	gal (liter)	83 (316)
Liquid lbs. (kg) CO2 Saturated @125 psig (8.6 bar)		789 (358)
Liquid lbs. (kg) CO2 Saturated @300 psig (20 bar)		717 (325)
Flow Rates		
Peak Demand	lb/hr (kg/hr)	40 (18.0)
Continuous	lb/hr (kg/hr)	15.0 (6.8)
Minimum Usage (no venting)		
Liquid	lb/day (kg/day)	3.0 (1.4)
Pressure Building System		
Standard Operating Pressure	psig (bar)	N/A
Economizer Circuit System		
Standard Operating Pressure	psig (bar)	140 (8.6)
Safety Device Setting		
Primary Relief Valve	psig (bar)	300 (20.7)
Secondary Relief Valve	psig (bar)	450 (310)

Optional Items

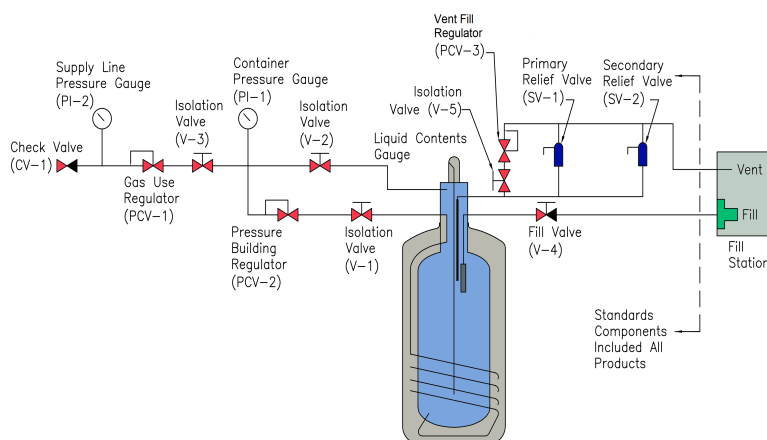


Fill Box provide ability to run the fill and vent lines any time in any direction along the outer building of the restaurant /facility without any interuption to the operations.

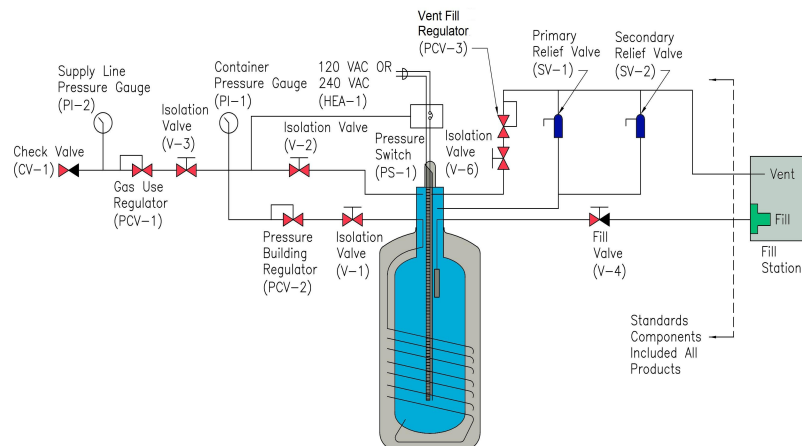


optional 3 x V-Shape Leg with Shipping Ring

EC750HF Flow Diagram



EC750HF with optional Heater Flow Diagram



Taylor-Wharton
Since 1742
www.twcryo.com

The Americas
Phone: (281) 738-2863

Asia-Pacific & Europe
Phone: (+ 60 3) 5191-3003

Email
sales@twcryo.com
customerservice@twcryo.com