

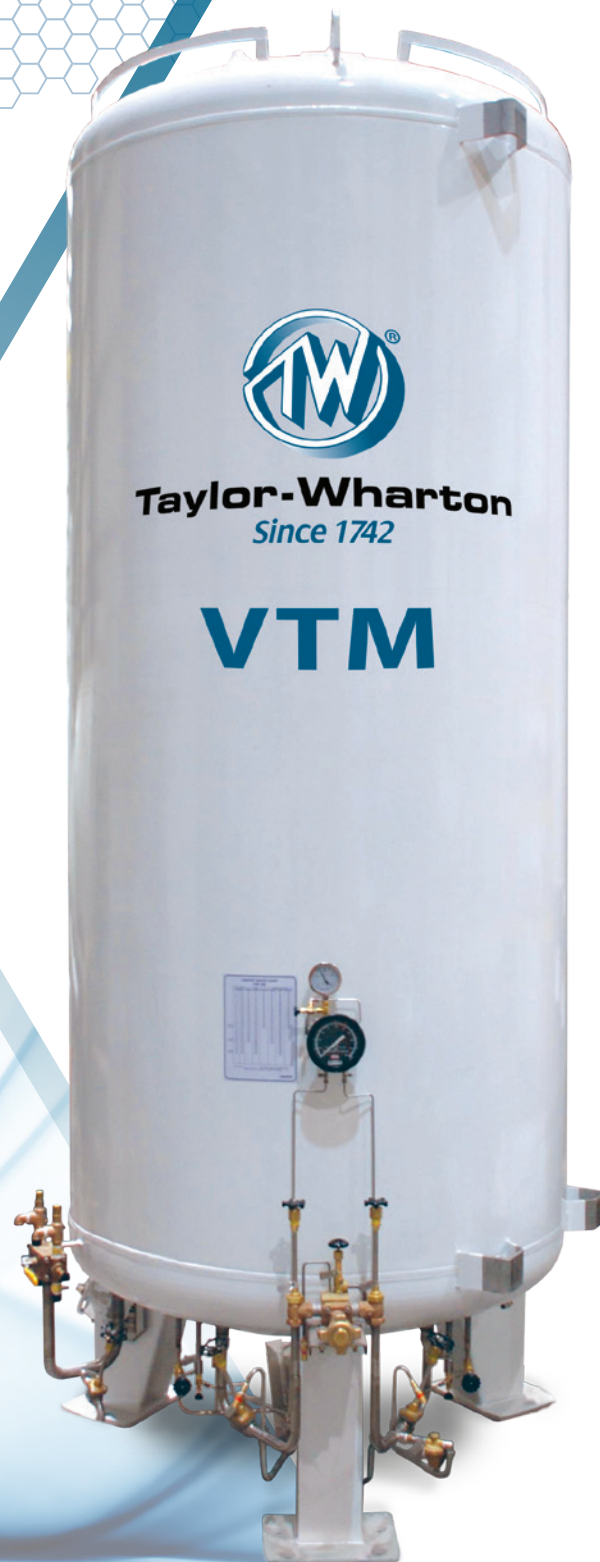


Taylor-Wharton
Since 1742

Taylor-Wharton
VTM Tanks
ASME + PED

VTM Atmospheric Service Bulk Tanks

- Built to Taylor-Wharton Quality & Reliability Standards
- Vertical Bulk Storage for Liquid Oxygen, Argon & Nitrogen
- Five Year Vacuum Warranty
- Structural Design Suitable for 200% of Gravity Seismic Sites
- Designed to Most Current Stringent International Building Code Seismic Standards
- Easy to Maintain with Readily Accessible Valves and Controls
- Standard Dual Safety Devices
- Mounting Holes are Positioned for Easy Installation of Anchor Bolts
- 2.0" Top Fill and 2.0" Vacuum Jacketed Auxiliary Liquid Line (6000G & Larger)
- Durable Industrial Coating with Epoxy Primer and Polyurethane Enamel Topcoat
- Custom Piped to Customers Specification Upon Request
- All Models PED Approved

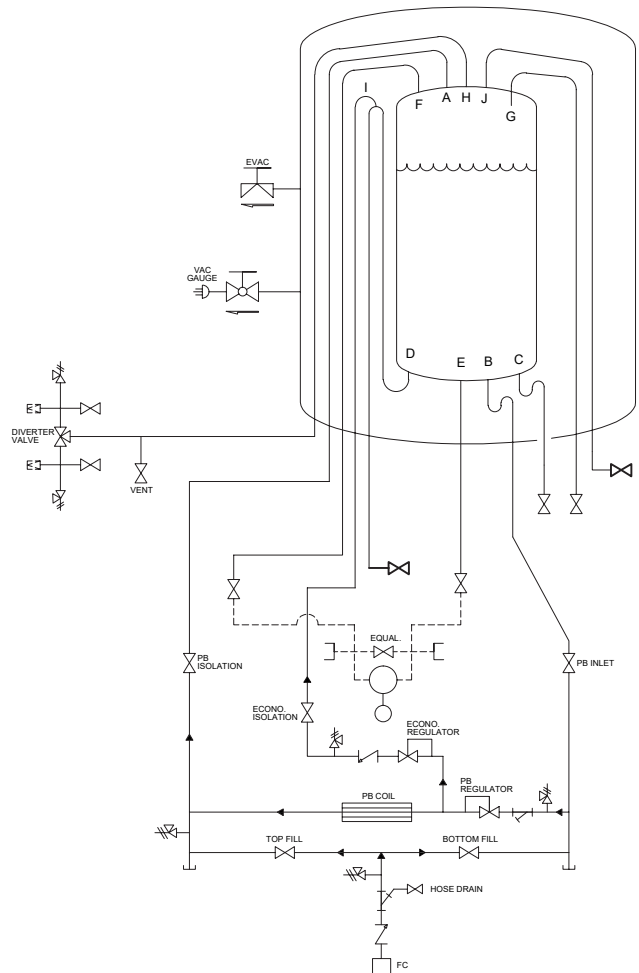


VTM Tank Specifications

MODEL	MAWP	WATER CAPACITY		DIAMETER		HEIGHT		EMPTY WEIGHT	NER
		GROSS CAPACITY	NET CAPACITY (95%)	feet - inches	mm	feet - inches	mm		
	bar	liters	liters	feet - inches	mm	feet - inches	mm	kg	%/DAY O ₂
VTM-1500-250	17	6,000	5,700	6'-2.8"	1,900	17'-7"	5,360	4,200	0.32
VTM-2900-250	17	10,400	9,880	7'-2.6"	2,200	20'-8"	6,300	7,700	0.27
VTM-5500-250	17	22,200	21,090	7'-2.6"	2,200	37'-5"	11,400	11,400	0.21
VTM-8500-250	17	35,500	33,725	9'-10"	3,000	29'-7"	9,000	20,200	0.15
VTM-11000-250	17	43,000	40,850	9'-10"	3,000	34'-5"	10,500	23,560	0.13
VTM-13000-250	17	48,600	46,170	9'-10"	3,000	38'-1"	11,600	24,700	0.12
VTM-15000-250	17	56,200	53,390	10'-6"	3,200	37'-9"	11,500	27,450	0.10

- Available in Any Maximum Pressure:
 - Also Standard in 34 bar
- Horizontal Models Available
- All Specifications are nominal

VESSEL NOZZLES - Pipe Size (in.)		
Tank Volume	1500-3000	6000-15000
Top Fill (A)	1-1/2"	2"
Bottom Fill (B)	1-1/2"	1-1/2"
Liquid Auxillary (C)	1-1/2"	2"
Siphon Withdrawal (D)	1-1/2"	1-1/2"
Liquid Instrument (E)	3/8"	3/8"
Gas Instrument (F)	3/8"	3/8"
Full Trycock (G)	1/2"	1/2"
Safety (H)	1-1/2"	1-1/2"
Economizer Return (I)	1/2"	1/2"
Pump Return (J)	1"	1"



Taylor-Wharton
Since 1742
www.twcryo.com

AMERICA'S

Phone: 281 738 2863
Sales@twcryo.com

MENA

Phone: +971 4 319 9365
Mena@twcryo.com

EUROPE

Phone: +32 9 272 7938
Europe@twcryo.com