



**Taylor-Wharton**

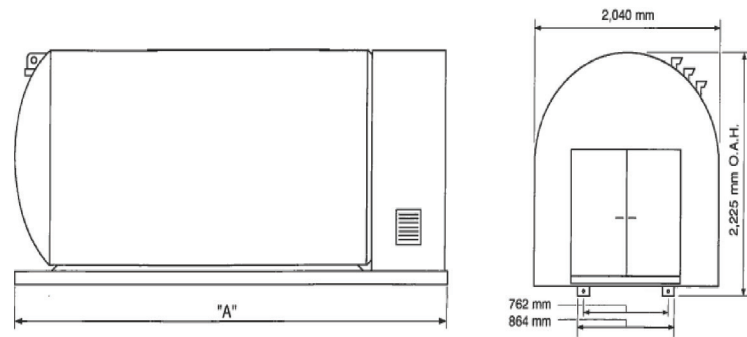
Equipping The Hydrogen Infrastructure

## Mobile Transfer Unit

Taylor-Wharton's rugged, lightweight liquid delivery tanks are designed for distributing liquefied gases to customer locations. The construction of each tank features superior high strength metal fabrication technology, advanced welding techniques and efficient cryogenic insulation.

### Features & Benefits

- **Highly efficient piping design making operator control and maintenance easy.**
- **Larger fill lines increase liquid flow, minimizing fill times.**
- **High capacity pressure building coil facilitates fill of customer station and shorter transfer times.**
- **High performance vacuum insulation minimizes product losses.**
- **The pressure vessel is protected by a safety valve and bursting disc (Dual safety device optional).**
- **The MTU series tanks are equipped with a transverse baffle to minimize liquid load shifts.**

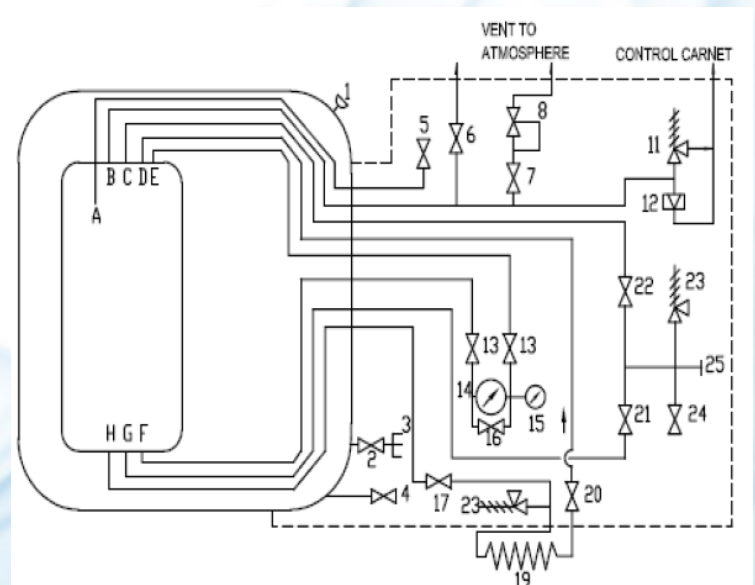


# Specifications

DESCRIPTION		MTU 1600	MTU 2800
DIMENSIONS -LENGTH (A)	mm	4013	5995
As per drawing above.			
DESIGN CODE		ASME	ASME
INNER MATERIAL		SA 240 Type 304	SA 240 Type 304
MAXIMUM ALLOWABLE WORKING PRESSURE	Bar PSI	19 275	19 275
CAPACITY (GROSS) (NET)	L L	6,300 5,670	11,300 10,60
WEIGHT EMPTY	Kg	3,770	5,650
WEIGHT LOADED (OXYGEN)	Kg	10,243	17,752
(NITROGEN)	Kg	8,353	14,218
(ARGON)	Kg	11,668	20,417

TAG NO.	DESCRIPTION
1	CASING SAFETY DEVICE
2	VACUUM GAUGE TUBE ISOLATION VALVE
3	VACUUM GAUGE TUBE
4	VACUUM ISOLATION VALVE
5	FULL TRYCOCK VALVE
6	BLOWDOWN VALVE
7	ROAD RELIEF SUPPORT VALVE
8	ROAD RELIF VALVE
11	CONTAINER SAFETY VALVE
12	CONTAINER BURSTING DISC
13	CONTENTS GAUGE ISOLATION VALVE
14	CONTENTS GAUGE
15	PRESSURE GAUGE
16	CONTENTS GAUGE BYPASS VALVE
17	PRESSURE BOILING VALVE (MANUAL)
19	PRESSURE BUILDING COIL
20	COIL ISOLATION VALVE
21	LIQUID PHASE FILL/WITHDRAWAL VALVE
22	GAS PHASE FILL/WITHDRAWAL VALVE
23	LOCK LINE RELIEF VALVE
24	HOSE DRAIN VALVE
25	FILL CONNECTION

ITEM	DESCRIPTION
A	FULL TRYCORK LINE
B	SAFETY LINE
C	TOP FILL LINE
D	P.B OUTLET LINE
E	GAS INSTRUMENT LINE
F	LIQUID INSTRUMENT LINE
G	BOTTOM FILL LINE
H	P.B INLET LINE



**Taylor-Wharton**  
Equipping The Hydrogen Infrastructure  
[www.twcryo.com](http://www.twcryo.com)

**The Americas**  
Phone: (251) 643-3024

**Asia-Pacific & Europe**  
Phone: (+ 60 3) 5191-3003

**Email**  
[sales@twcryo.com](mailto:sales@twcryo.com)  
[customerservice@twcryo.com](mailto:customerservice@twcryo.com)